

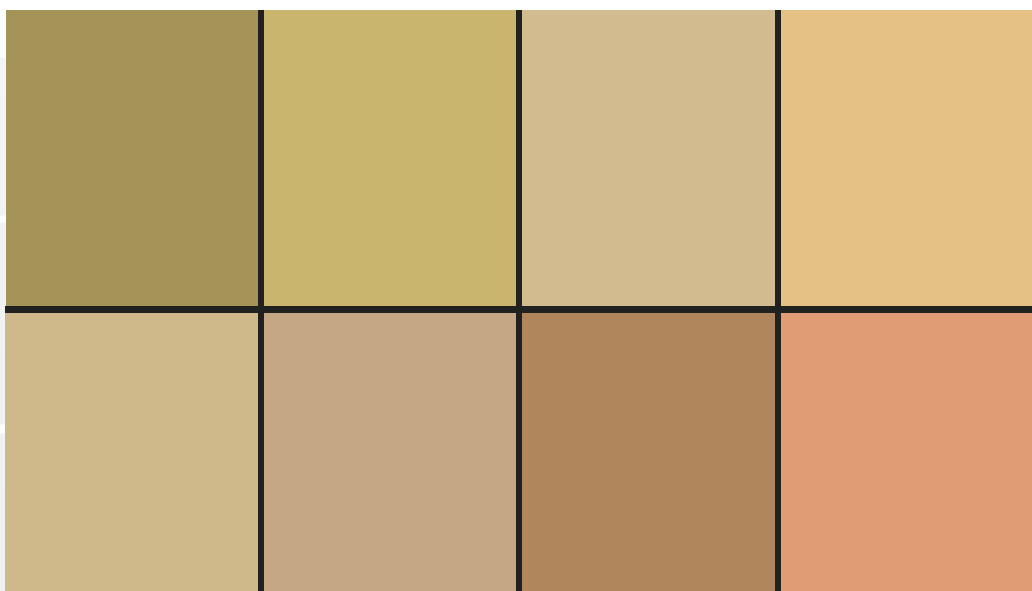
SAHARA



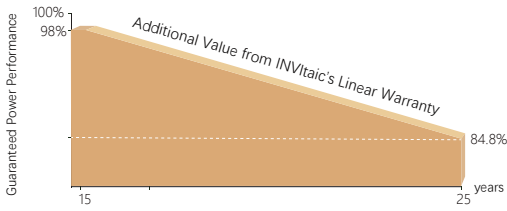
Sahara, though a grand finale of everything, yet contains glitter of stars in countless universes, for in a grain of sand on the fingertip, there is a universe unfolding, and from sands buildings arise. Rays of sunlight travel one hundred fifty billion meters to meet architecture that stand fearlessly. Sahara, absorbing the strength of life and courage over time, embraces the building in serenity and calm. Life is seeking answers, so why not extend your imagination to Sahara, who may show you the way.

INVITAIC

Module Model



LINEAR PERFORMANCE WARRANTY



- 15** Year Product Warranty
- 25** Year Linear Power Warranty
- 0.55%** Annual Degradation Over 25 years

Glass	Heat Strengthened Glass
Junction Box	IP68 Rated
Output Cables	TÜV 1x4.0 mm ² Customized Length
Maximum System Voltage	1500 VDC (IEC)
Maximum Series Fuse Rating	30 A
Power Tolerance	0~±3 %
Temperature Coefficients of Pmax	-0.35 %/°C
Temperature Coefficients of Voc	-0.29 %/°C
Temperature Coefficients of Isc	0.048 %/°C
Nominal Operating Cell Temperature (NOCT)	45±2 °C
CTM	58-68 %



Thickened Double-Layer
Tempered Glass



High Impact Resistance



50% Increased High Mechanical
Performance Modules



Optimized Soundproofing
Insulation

Higher Aesthetics

Inherent advantages of integration in module design, better appearance without metal wire exposition.

Higher Power Efficiency

Higher-density cell arrangement can put more cells per unit area and achieve higher module efficiency, meet the requirements for energy-saving buildings.

Building Integrated Higher Safety

Double layers of tempered glass to meet the requirements of building safety: with fireproofing, better wind load, heat resistance and frost resistance. Be used as building unit for integrated installation.

